



Lincoln University achieves green campus status in GreenMetric World University Rankings

Te Whare Wānaka o Aoraki Lincoln University has significantly improved its global sustainability ranking in the UI GreenMetric World University Rankings for 2024, moving up nine places to 85th.

This achievement is particularly noteworthy considering the jump of 294 universities engaging in the global sustainability ranking system operated by Universitas Indonesia (UI). Lincoln is the only New Zealand university to participate in this ranking.

In 2024, a total of 1,147 universities from 95 countries participated in the UI GreenMetric ranking system, which rates each institution on their commitment and actions towards sustainability, based on six environmental sustainability indicators: Setting and Infrastructure, Energy and Climate Change, Waste, Water, Transportation, Education and Research.

Lincoln University scored 8,565 points out of a maximum of 10,000 points, achieving its highest ranking of 66th in the indicator of Setting and Infrastructure.

Lincoln University Vice-Chancellor and Chair of the Sustainability Taskforce, Professor Grant Edwards, acknowledged the improved result and said the GreenMetric rankings demonstrated the University's vision to be an exemplar of sustainable practices for the land-based sector.

"Lincoln University is Aotearoa's only specialist land-based university, and we are committed to facilitating excellent education and research to help shape a world that benefits from a greater understanding of the

relationship between land, food and ecosystems. This is reflected in our continuous evolution of programmes with the Bachelor of Commerce (Sustainability) and the Master of Environment and Agriculture being recently introduced to focus on balancing commercial needs with environmental sustainability.

"Our researchers and students are leading positive and impactful change in the land-based sectors at a time when society is demanding more efficient and sustainable production practices that safeguard the environment and intergenerational wellbeing.

"Through our participation in the GreenMetric world university rankings, we are demonstrating Lincoln University's environmental kaitiakitaka to a global audience, while also showcasing our renowned campus experience."

The decade-long campus development programme has delivered a comprehensive suite of state-of-the-art campus assets that help position the University for a successful future while significantly increasing its use and generation of renewable energy and hugely reducing its carbon footprint.

"As an example, our new flagship science facility Waimarie has been built to level 4 Green Star standard, incorporating solar panels that bring the University's total annual solar generation up to 802,000 kWh. With our continued focus on reducing our carbon emissions, we are on track to reach our goal for our campus to be carbon neutral by 2030 and carbon zero by 2050."



Results summary for Lincoln University

- 66th for Setting and Infrastructure
- 97th for Transportation
- 104th for Education and Research
- 147th for Energy and Climate Change
- 231st for Water
- 257th for Waste

The International GreenMetric Network

UI GreenMetric World University Rankings is an initiative of the University of Indonesia. A non-profit operation, it publishes annual university rankings on sustainability.

Participating universities complete a questionnaire and join workshops and events that are held throughout each year. From there, each university's assessment is based on three pillars – environmental, economic and social value – and incorporates the six indicators of Setting and Infrastructure, Energy and Climate Change, Waste, Water, Transportation, Education and Research.

lincoln community and residents' association incorporated

Hello again from LiCRA – Lincoln Community and Residents Association Inc. This month's meeting was held on the 13th February. The pressing issue was the replacement of the Chairperson due to Vic Wadham's departure. After a study of the constitution it was deemed that two rules would cover the situation. Firstly the Deputy Chair could step in to fill the Chairperson's position and secondly it was the committee's responsibility to elect the Officers of the Association. It was decided that the Deputy Chair (myself – Lindsay Wilson) could fill the role until the next elections at the AGM likely to be in July. I duly accepted.

Other topics discussed included the new sculpture, the Town Centre Upgrade, and the Community Newsletter. After some good work and prompting by Cr. Grant Miller the council is now continuing to support a previously established programme in partnership with the Tai Tapu Sculpture Garden to promote local artists. A new sculpture is now in place. The arrangement is that for a small rental fee each sculpture will remain until sold and then be replaced with a new one. It is hopeful that an information plaque will be put in place shortly.

The committee is still aware of dissatisfaction with the Town Centre Upgrade design especially from the old town centre businesses. We have pledged to undertake further consultation with the businesses as well as the community at large to supply feedback to the council. We only have one shot at this and we have to get an outcome that is somewhat acceptable by the majority. Please contact us NOW if you have concerns.

LiCRA is very proud of having this newsletter, Lincoln Community News, which is produced on our behalf by Selwyn Print. Due to a rapidly changing community we are in discussion with Selwyn Print to ensure that the high quality newsletter continues to be delivered to as many residents as possible. Both parties are committed to achieving a great outcome.

We are always keen to hear perspectives from the community so please get in touch.

All the best to everyone.

– Lindsay Wilson

Other committee members: Troy Volman (Secretary); Tanya (Treasurer); Rebecca Dollary; Cam Holmes; Katheryn Claridge; Sam Elder.

LiCRA's next meeting is 7pm, Monday 17th March (TBC) at Community Care Lincoln, 16 Lyttelton Street.

On the socials? Jump on to Facebook, search 'Lincoln Community and Residents Association Inc' or use the link fb.com/groups/336517852544951.

Join this growing online community.

Connect with us:

Email: Lincolnresidentsinc@gmail.com

Facebook: Lincoln Community and Residents Association Inc.

Please scan the QR code to go to our feedback form.



editorial info.

Lincoln Community News is the official newsletter of the Lincoln Community and Residents' Association Incorporated. It is produced by The Selwyn Printing Company and comes out monthly, with the exception of January.

We're seeking stories!

Do you have a story to share? We are always looking for news and information about what is happening in Lincoln and the Selwyn District. We'd like to hear the stories of residents' achievements, exciting happenings, community developments and more! This is a community newsletter and we welcome your voice.

Deadline is 20th of month preceding publication month. Text should be supplied as a non-formatted Word or Text document. Please supply any images as high resolution JPEG files. Adverts should be supplied as print ready, high resolution PDF files.

TO SUBMIT ARTICLES, STORIES OR ADVERTISING, PLEASE EMAIL:

LCN@selwynprint.co.nz

READ ISSUES ONLINE AT
www.selwynprint.co.nz



Views expressed within this newsletter are not necessarily those of the publisher.



Down by the Liffey Gallery

Lincoln's Community Art Gallery, 1 James Street, Lincoln

Dreamy florals & landscapes

Tracy Chau + Kilmeny Keyse

This exhibition features talented artists Kilmeny Keyse and Tracy Chau. Kilmeny's painterly landscapes capture both an atmosphere and feeling. Tracy's lovely watercolour florals are delicate and detailed as she paints these blooming beauties. Together they bring together the most beautiful and dreamy exhibition.



12 MARCH - 6 APRIL

Open: Wed-Thur 11.30am-2.30pm Fri-Sun 10am-4pm

liffeygallery1@gmail.com www.downbytheliffeygallery.com



From carpenter's home to carpark: 16 William Street

Imagine looking across an empty subdivision with the first houses being built, the sound of carpenters' hammers ringing out – no, not Lincoln 2025, but Lincoln 1860s! The first quarter-acre sections of Fitzgerald's Lincoln township went on sale in 1862, for an upset price of 12 pounds.

The advertising was persuasive, good land, water and employment, with churches, school, marketplace and courthouse to come.

The site of the town... is on good dry land lying on both sides of the valley... having a beautiful stream of clear and delicious water running rapidly at the bottom. ... Such is the extent of land already in cultivation in the neighbourhood, that blacksmiths and other mechanics would find an excellent opening for business.

Two sections in William Street, close to the main street were bought on the same day, 3 May 1864 by Henry Burrows Stiffe, Christchurch Commission Agent. He sold them a year later, price now 15 pounds. Blacksmith Keith Forbes Gray bought no. 14 and Jamie Wood tells the story of the Blacksmith's Cottage in our newsletter no. 46, available online at selwynstories.selwynlibraries.co.nz/nodes/view/197

Carpenter John Currie bought no. 16. In September 1866 he sold to another carpenter John Pratt for 165 pounds. Now with a house as the records note: '1/4 acre more or less, with a frontage of 100 links on William Street, together with the dwelling house and all other erections thereon.' John Pratt immediately mortgaged the property for 190 pounds. Lincoln Union Church records note that in 1866 John Pratt built their first church and also provided the furniture. Three years later he was also paid for relining the building.

1868 was a successful year for both Pratt and his new neighbour,

blacksmith William Keith Watson. Both won first prizes at the Agricultural Show, Pratt for his broadcast sowing machine and Watson for his rotating harrow. In July John repaid his mortgage.

What happened next? We are continuing the research and would welcome any memories and photos of the cottage. Does this 2008 photo show the original cottage?



Photo courtesy of David Hannan, LDHS, 2008.

If you are interested in the history of Lincoln and the district, the Committee would welcome your membership support, skills and curiosity!

You can find us at our Open Days at Liffey Cottage and Pioneer Hall on the first Sunday of the month.

Contact: Adriana de Groot, email sec.ldhs@gmail.com, or phone President Rupert Tipples, 03 329 5634.

down by the liffey gallery

downbytheliffeygallery.com

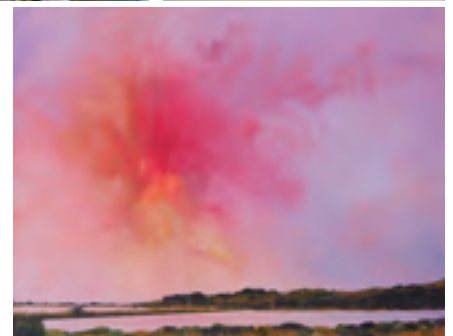
Did you know there's an art gallery in Lincoln?

Each month Down By The Liffey Gallery features a selection of talented local artists in an exciting exhibition.

This month's exhibition is '*Dreamy Florals and Landscapes*' and it is on from Wednesday 12th March to Sunday 6th April. This exhibition features talented artists Kilmeny Keyse and Tracy Chau. Kilmeny's painterly landscapes capture both an atmosphere and feeling. Tracy's lovely watercolour florals are delicate and detailed as she paints these blooming beauties. Together they bring together the most beautiful and dreamy exhibition.

Opening hours are 11.30am–2.30pm Wednesday and Thursday, 10am–4pm Friday to Sunday.

Down By The Liffey Gallery, 1 James Street, Lincoln. downbytheliffeygallery.com



Embracing drowning prevention technology to save lives at the Selwyn Aquatic Centre

Selwyn Aquatic Centre will be the first New Zealand swimming pool to use cutting-edge technology to help keep pool users safe.

The new drowning prevention system uses camera and artificial intelligence (AI) technology to scan swimmer activity for signs of potential drowning incidents. Installation started with one pool in December 2024, with the full complex to be completed by end of June 2025.

The technology will use 27 cameras across the aquatic centre to track and analyse swimmer movements, alerting lifeguards to possible signs of a swimmer in trouble via waterproof smart-watch technology and dashboards in the lifeguard office. The notifications will show in which pool the incident is happening and the location of the person.

James Richmond, Head of Sport and Recreation has embraced the new technology.

"The Selwyn Aquatic Centre is our most used site with over 530,000 customers in the past year. Lifeguarding is a challenging role, and this technology is incredibly innovative and is a valuable tool that will help our qualified lifeguards to keep people safe. We're thrilled to be one of the first users of this technology in New Zealand."

The Council began investigating the possibility of introducing the technology after a person had a medical incident while swimming at the centre in 2023. The person was successfully assisted by staff, but they noted it was challenging to see the person due to reflection and glare on the water. A subsequent investigation recommended looking into technology that could help reduce that risk.

The innovative technology is part of the council's new digital strategy to use more technology to improve council operations.

"We're going digital, and this project is just the beginning – we are committed to doing things differently, making use of technology and being future-focused," says Chief Digital Officer, Matt McGrath.

Recreation Aotearoa are closely following the Council's journey with drowning detection and prevention technology.

"It's exciting to see these advancements. Technology has the potential to help lifeguards save lives, but we remind parents and caregivers that active supervision is critical to ensure our kids are safe in and around the water," says Sarah Murray, Chief Executive, Recreation Aotearoa.

While the system uses cameras and AI software to detect signs of distress before drowning occurs, privacy is also top of mind for the Council, Mr McGrath says.

"The system complies with international laws and privacy regulations. The AI recordings are only used to identify body behaviours, not record details that could identify people. Recordings are stored on-site and are automatically deleted after seven days. No staff members will have access to the recordings."

–Selwyn District Council

lincoln senior citizens

The 4th of February saw 41 of our seniors arrive at the Lincoln Event Centre for our monthly meeting.

We were lucky to have Donna as our guest speaker this month. She gave a very interesting talk on her time spent at Antarctica. Donna had lots of great slides to show the area and then talked in depth about the work carried out there and the challenges that are faced in that unique environment. She had some funny moments to share with us and was easily able to reply to the many questions that followed. Several seniors commented later that Donna was one of the most interesting speakers that we have had.

This was followed, of course, by another yummy afternoon tea, special thanks to Evelyn for that and organising the afternoon. Another enjoyable day was had by all.

Upcoming Events

On **Tuesday 4th March** we will have our 2025 AGM at the Lincoln Event Centre, so be ready to vote for those members you would like to organise and run your Lincoln Senior Citizens for the next year and maybe you would like to volunteer your services to assist. The starting time is 1.30pm and at the completion of the AGM there will be the usual yummy afternoon tea and lots of time to chat and mingle with old friends and maybe make some new ones.

Then on Tuesday 1st April – no, this is not an April Fool's joke – we have planned a bus trip to Little River followed by a yummy lunch there, we will let you know all the details at our March meeting.

We look forward to seeing you there.

New members are always welcome and if you think this is for you and you would like to join us we would love to meet you.

Contacts: Evelyn on 027 712 7195 or Gloria on 027 4346 554.



GRANT APPLICATIONS

The Lincoln Community Trust has funds invested for the benefit of the community of Lincoln. Grant applicants should be Community organisations who must reside, ideally pay rates, or operate within the Lincoln Community rating area. Such funds may be distributed twice a year. Applications for such grants may be made at any time but must be in the hands of the Trust by the **31st of March** or the 30th of September each year.

Application forms are available from
Lincoln Community Care, 16 Lyttelton St, Lincoln
or via email from admin@lincolncomcare.co.nz



Join our Selwyn Lions team – it's not all hard work!



Selwyn Lions President Helen W, new member Nicola and her sponsor Mandy.



Barbara W and Helen A catering for a party.



A New Year's catchup BBQ. Selwyn Lions members relaxing and enjoying refreshments.

Our clubs' principle purpose is to raise funds for those in need in our community. Those funds are generated in a number of ways:

- catering services providing nutritious and delicious fare
- hosting our own events
- raffles made up of donations from generous businesses,
- selling of beautiful donated Gerberas.

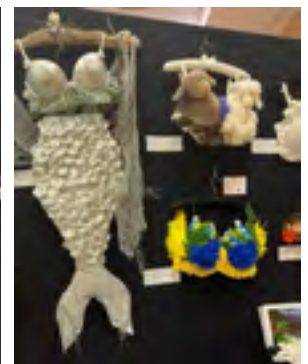
In addition we enjoy working with other groups in our communities to provide services to others. For example *Toot for Tucker* – collecting food for local food banks; assisting Lincoln Envirotown with their Repair Café; distributing gifts from Santas' workshop; making Cuddle Hearts for Lisa Pagets' project for NICU babies and visiting residents at Woodcote Retirement Village.

This is all the work of our wonderful team of volunteers – like-minded ladies who enjoy having fun and giving to others. New members are always welcome, why don't you join us? Come along to our Social meeting (with a guest speaker) on the 2nd Tuesday of the month to see if Lions is for you. Give Jane, our Membership Coordinator, a call on 027 631 9450 to find out more. You won't regret it, it is very fulfilling and a lot of fun.

It's not all hard work – occasionally our members get together to share some laughs over a few refreshments and some delicious food. In January, our previous President, Jane, kindly opened up their garden for our New Year BBQ. What a gorgeous setting

for a relaxing chat. A couple of prospective new members were invited, it was a lovely way for them to meet the team in a less formal setting.

Our first social meeting for 2025 included a quiz hosted by 1st VP Sharon. We split into teams, chose a name and were given three sets of questions to answer. The final set was particularly entertaining. Members had to submit a secret fact about themselves and others had to guess who it was ... we certainly are a group of diverse and talented ladies!



SAVE the DATE – Saturday 3 May 2pm to 5pm at the Lincoln Event Centre Decorate a Bra or Undies!

We are again holding our very popular bi-annual fundraising event. This time funds raised will be donated to the Cancer Organisations of Canterbury in recognition of breast and prostate cancer.

Entitled *Up Top and Down Under*, the challenge is to decorate either a bra or blokes undies (or both). The competition is open to everyone and the cost to enter is \$20 for adults or \$15 for those under 18. Entry forms and category details are available by emailing secretary.selwynlc@lionsclubs.org.nz

Get your creative impulses activated!

Entry to the event on the day is \$20 which includes afternoon tea and five voting slips. We are looking forward to some exciting entries. See next month's newsletter or our Facebook page for further information.

www.facebook.com/SelwynLionsClub

Now in LINCOLN!

the
mobile
ear
nurse

Mondays in Lincoln
at 16 Lyttelton Street!

Professional and friendly
ear nursing service.

Book your appointment now!

Ear wax removal by microsuction
Removal of foreign bodies
Management of ear infections
Assistance with other ear conditions

ACC registered provider
Veterans' Affairs provider

Sabine Hellenbrand *Registered Nurse*

Email: sabine@mobile-ear-nurse.nz Ph: 022 188 3755

www.mobile-ear-nurse.nz



Some incredible films hit the big screen at our wee cinema last month!

Tinā and *Bridget Jones: Mad About the Boy* have been extremely popular for girls' nights, date nights, private screenings and for no reason at all! These will be still screening throughout March along with *Widow Clicquot*, *A Complete Unknown*, the cute family favourite *10 Lives* and many more!

Check out what is hitting the big screen this month and as always keep an eye on our website for regular updates:

SEPTEMBER 5 *Drama (M)* Screening from 6 March

The whole world was watching. Based on the true story, *September 5* unveils the decisive moment that forever changed media coverage and continues to impact live news today. Set during the 1972 Munich Summer Olympics, the film follows an American Sports broadcasting team that quickly adapted from sports reporting to live coverage of the Israeli athletes taken hostage. Through this lens, *September 5* provides a fresh perspective on the live broadcast seen globally by an estimated one billion people at the time.

At the heart of the story is Geoff (John Magaro), a young and ambitious producer striving to prove himself to his boss, the legendary TV executive Boone Arledge (Peter Sarsgaard). Together with a German interpreter and his mentor, Geoff unexpectedly takes the helm of the live coverage. As narratives shift, time ticks away, and conflicting rumors spread, with the hostages' lives hanging in the balance, Geoff grapples with tough decisions while confronting his own moral compass.

HARD TRUTHS *Comedy/Drama (M)* Screening from 13 March

Legendary filmmaker Mike Leigh returns to the contemporary world with a fierce, compassionate, and often darkly humorous study of family and the thorny ties that bind us. Marianne Jean-Baptiste plays Pansy, a woman wracked by fear, tormented by afflictions, and prone to raging tirades against her husband, son, and anyone who looks her way. Meanwhile, her easygoing younger sister, is a single mother with a life as different from Pansy's as their clashing temperaments – brimming with communal warmth from her salon clients and daughters alike. This expansive film from a master dramatist takes us into the intensities of kinship, duty, and the most enduring of human mysteries: that even through lifetimes of hurt and hardship, we still find ways to love those we call family.

This thought-provoking film is a masterclass in character study, offering a raw and unflinching look at the complexities of human nature. A must see!

MICKEY 17 *Sci-fi/Comedy (TBC)* Screening from 20 March

What does it feel like to die? Robert Pattinson stars as the ultimate 'expendable' employee in *Mickey 17*!

From Bong Joon-Ho, the Oscar-winning director of *Parasite*, comes *Mickey 17*, a gripping sci-fi film based on Edward Ashton's novel *Mickey 7*. The film follows Mickey Barnes, a financially struggling man who signs up as an "expendable" crew member on a mission to colonise the planet Niflheim. As an expendable, Mickey is sent on life-threatening tasks, knowing he can be regenerated each time he dies. But when one of his clones, Mickey 17, is mistakenly thought dead, both he and his new clone, Mickey 18, must navigate the harsh realities of their existence in a brutal, controlling colony.

Would you like to have the cinema all to yourself? You can!

Hire the entire cinema (all 15 seats) for your next special occasion: Work Do's, Children's Parties, Girls' Nights and Boys' Nights. Whatever the occasion we have you sorted at The Apollo and The Laboratory!

For more information or to get a date locked in please email us at: goodparties@thelaboratory.co.nz

What's on at The Laboratory

Our Sunday Music Sessions run every Sunday from 3–5pm. Come on down and enjoy the good food, good brews and good tunes!

Sat 1 March	Karma Keg 2–4pm for Halswell United AFC
Sun 2 March	Sunday Music Session: Nick Jackman
Sat 8 March	Karma Keg 2–4pm for Ararira Springs Primary
Sun 9 March	Sunday Music Session: Steph & Sandi
Sat 15 March	St Patricks Day! All day breakfast, outdoor games and fun for the kids and live music from 7pm
Sun 16 March	Sunday Music Session: Henry McIlraith
Wed 19 March	Nerd Nite Selwyn
Sun 23 March	Sunday Music Session: Rockabella
Sun 30 March	Sunday Music Session: Dalia Thompson

Live, Love, Work, Local

- ✔ \$12,500 ^{+GST} flat fee
- ✔ No upfront costs

- ✔ Free marketing
- ✔ No sale, no fee



Your award winning Lincoln agents!

Anna James

📞 027 222 2742 ✉️ anna.j@arizto.co.nz

Tracy Stevenson

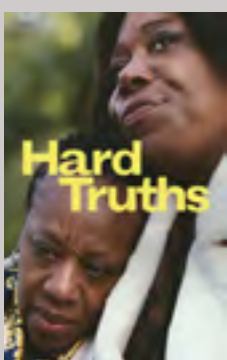
📞 027 543 9029 ✉️ tracy.s@arizto.co.nz

Licensed Salespeople (REAA 2008)

APOLLO
CINEMA
LINCOLN'S BOUTIQUE CINEMA

*Entertainment
at...*

The
LABORATORY
LINCOLN'S BREWPUB & KITCHEN



Sunday Music Sessions
Live music every Sunday 3-5pm
Various artists, Good Tunes

Sat 15 March

St Patricks Day

All day breakfast, live music 7pm
Outdoor games & fun for the kids!

Sat 1 & 8 March

Karma Reg 2-4pm

Family friendly fundraising!

thelaboratory.co.nz

goodparties@thelaboratory.co.nz

17 WEST BELT - LINCOLN - 03 3253006



Butterfly and Moth Walk Sunday 16 March

You're invited to join the Banks Peninsula Conservation Trust with local entomologist Brian Patrick for a fun and enlightening look into some of the weird and wonderful creatures that inhabit this unique landscape. Brian will tell us about the fascinating lepidopterans that inhabit this tough environment before we head out to meet some of them up close in Hauroko covenant.

Along with birds, plants and lizards, invertebrates play a key role in ecosystem health. Come and find out more about these unique characters on our back doorstep, the extraordinary adaptations they've made to survive in this harsh environment and what we can do to protect and enhance their vulnerable habitat so they thrive. We'll also discuss what you can do at home to encourage native butterflies and moths.

When: Sunday 16th March 1-3pm
(Postponement date Sunday 23rd March)

Where: Te Mata Hapuku Birdlings Flat
(Further details provided on reply)

Numbers are limited, please RSVP to marie.neal@bpct.org.nz.




West Melton
COUNTRY SUNDAY
FETE 30 MARCH 2025
 10am-3pm
 WEST MELTON SCHOOL
 @westmeltonfete








DR FLEUR HARRIS

CHILDREN'S SPEECH & LANGUAGE THERAPIST



"I empower parents to nurture their child's learning. I am passionate about cultivating children's learning for life."

Are you wondering about your child's speech and language development? I have 43 years experience and am based right here in Lincoln. Contact me for a chat in a local café, free of charge.

Dr. Fleur Harris PhD • 027 498 8355
info@nzwordtrees.com • www.nzwordtrees.com

BRIDGESTONE TYRE CENTRE **LINCOLN**

TYRES – ALL BRANDS

ALL TYPES & ALL SIZES

Wheelbarrows, Cars, Trucks,
Tractors, Motorbikes & More

WHEEL ALIGNMENTS

BATTERIES

Wide range at great prices

FLEET SERVICE

Call now for competitive rates

 **03 325 2129**

 23 Gerald Street, Lincoln

 fb.com/BridgestoneNZ





Nancy Moroney, Angela Fowler (Ladies Shootout winner), Morrie Henderson (Patron).



Nancy Moroney, Mike Bond (Mens Shootout winner), and Heather Templeton (Ladies Captain).



Presidents Cup – Ross Pamment holding.



Watson Trophies, Marlene Morrison left, Nancy Moroney (presenting), Ross Metcalfe right.



Club scene during presentation.

Lincoln Golf Club kicked off 2025 with its annual shoot out competition. Players qualify through November and December taking the best Gross score (handicap) from one of five rounds. Only the top ten in Ladies and Mens gets through. This year the scores were very competitive with Ron McLaren scoring a net 58 (10 under par) which was the best qualifying round.

The ten players compete over nine holes with one player being dropped out after each hole, until only two are left on the last. Both Ladies and Men's games were close all the way, with chip or putt offs on some holes to decide who carried on

and who would be relegated to watching.

It is perhaps the most sought after trophy of the year. And it was Angela Fowler and Mike Bond who were the first to be crowned champions in 2025.

The official Opening Day was held on the First of February with a mixed pairs American Foursomes tournament. This is where after a tee shot, partners select which ball to play then take alternative shots. 40% of the combined handicap evens things out across the field.

With a fabulous turn out of over 60 players, great fun was had by all along with a splendid BBQ. In the end it was the combined forces of Marlene Morrison and Ross Metcalfe.

Having completed the Opening Day and the Shootout competition attention now turns to the Club Championships, with qualifying underway.

However, the most outstanding news is for the first time since 1969 Lincoln has won back the Canterbury Golf – Presidents Cup! This was competed for on 10th February at Clearwater against all other local Canterbury club presidents.

Our very own Club President Ross Pamment concurred all others to raise the cup.

Well done Mr President.

SELWYN AUTO

Friendly service, and quality workmanship you can trust
FREE COURTESY CARS, PICK UPS AND DROP OFFS AVAILABLE



Located just 3 minutes from Lincoln!

VEHICLE REPAIRS & SERVICING

PARTS & ACCESSORIES

WOFS & DIAGNOSTICS

03 329 5841

office@selwynauto.com

132 Leeston Rd, Springston

WWW.SELWYNAUTO.CO.NZ





The complete range of wedding flower requirements from bouquets to venue decoration and setup.

Five florists with over 30 years experience of wedding flower design.

P 325 2621 • 3 Gerald St, Lincoln • broadfieldflowers@xtra.co.nz
Order online www.broadfieldflowersflorist.co.nz

Why Choose Beaver Tree Service? Your Trusted Partner in Tree Care

Caring for trees properly takes experience and expertise. At Beaver Tree Service, we understand the unique challenges of tree management in New Zealand's urban and rural landscapes. Our highly skilled arborists provide expert care for your trees, ensuring they remain healthy, safe, and well-maintained.



Overgrown trees can pose safety risks or obstruct light and views. Our team specialises in precise tree reduction, carefully shaping trees while preserving their health and structure. Whether it's clearing branches for better clearance or improving sunlight exposure, we take a precise and thoughtful approach.

Routine care helps trees grow strong and prevents potential problems. Our services include pruning, thinning, shaping, and, when necessary, removal. We assess each tree individually to provide the best care for its species and surroundings.

Not all tree problems are visible at first glance. Disease, decay, and structural weaknesses can develop over time. Our arborists provide health assessments, identifying risks and recommending solutions to improve tree stability and longevity.

From residential properties to large rural estates, we provide tree management solutions for every setting. Our team works to ensure that your trees thrive while maintaining safety around homes, roads, and infrastructure.



With years of experience, a dedicated team, and a whole lot of passion for what we do, we're your trusted professionals for all things tree care. So, if your trees need a little attention (or a lot), give us a call, we're always happy to chat!

– Bryce Robb,
Director/Head Arborist of Beaver Tree Service
www.beavertree.co.nz





*Lincoln Men's Under 5 Singles
Finalists: Glenn Sagar (Runner Up),
John O'Connell (Winner).*



*Lincoln Men's Open Singles
Finalists: Jeff Reed (Runner Up),
Martin Rowson (Winner).*



*Lincoln Men's Triples Club
Champions: Keith Thompson,
Barry Hollands, Brian Rowlands.*



*Ellesmere Open Men's Under 5
Singles Finalists: Adam Stone
(Runner Up), John O'Connell (Winner).*

Men's and women's Club Championship games continued in January and February. The winners of these Championship events go on to represent Lincoln in their respective Ellesmere Champion of Champion and Bowls Canterbury Champion of Champion events.

Men's Championship Under 5 singles resulted in a win for John O'Connell 21-12 over Glen Sagar. As reported last month John also won the Championship 1st and 2nd Year Singles.

Martin Rowson won the Championship Men's open Singles 21-15 defeating Jeff Reed. This is Martin's 5th Lincoln Championship singles title.

The Championship men's club triples were won by Barry Hollands, Keith Thompson and Brian Rowlands on an extra end 16-15 against the team of Simon Vincent, Bruce Gemmell and Jeff Barnes.

Nicki Moen was the winner of the Championship 1st and 2nd Year Women's singles 21-16 with Gail Williams runner up.

Lincoln Bowling Club were hosts to 24 players in the Ellesmere Open under 5 singles. The final played between John O'Connell (Lincoln) and Adam Stone (Dunsandel) resulted in a win to John 13-7. Lincoln Bowling Club is very fortunate to have a number of new bowlers like John coming through the ranks.

Monday evenings have been busy at the club with community bowls taking place. If Monday's weather is fine this event will run over six weeks and will conclude on the 3rd March. A number of different teams have won in the four weeks to date – Green Grenades, Incredi Bowls, Clever Baskets and Just-4-A-Laugh to name a few.

Lincoln Bowling Club welcomes non bowlers and new members. Loan Bowls are available and coaching can be arranged. Social and competitive bowling is available. Contact secretary Dave Kelly secretary@lincolnbowlingclub.com for membership enquiries.

MAINSCAPE

GARDEN SUPPLIES

Making your great outdoors greater

DRY SCREENED TOPSOIL

\$517.50

10m³

\$287.50

5m³

Free delivery

Check out our all new website

www.mainscapedgardensupplies.co.nz

Contact Us

📍 1543 Springs Road, Lincoln

☎ 021 241 7908

✉ sales@mainscape.co.nz

Mon - Fri

8:00am - 5:00pm

Saturday

8:00am - 3:00pm

SELWYN COMMUNITY PATROL

We are on the search for night owls for our late patrols - 11pm onwards. If you are interested please give us a call, we would love to meet you.

LINCOLN and Surrounding areas

PHONE

03 660 0320



LITTLE SHOP OF HORRORS

Lincoln High School
Te Kura Tuarua o Waihora

WITH SPECIAL THANKS TO
CHALLENGE!
Lincoln

26TH - 29TH MARCH 2025

TICKETS AVAILABLE FROM TRYBOOKING.COM



MUSIC BY: **ALAN MENKEN**
BOOK AND LYRICS BY: **HOWARD ASHMAN**

BASED ON THE FILM BY ROGER CORMAN SCREENPLAY BY CHARLES GRIFFITH
ORIGINALLY PRODUCED BY THE WPA THEATRE (KYLE RENICK, PRODUCING DIRECTOR)
ORIGINALLY PRODUCED AT THE ORPHEUM THEATRE NEW YORK CITY BY THE WPA THEATRE DAVID GEFFEN, CAMERON MACKINTOSH AND THE SHUBERT ORGANIZATION
LICENSED EXCLUSIVELY BY MUSIC THEATRE INTERNATIONAL (AUSTRALASIA)



There are only two days with fewer than 24 hours in each lifetime, sitting like bookmarks astride our lives: one is celebrated every year, yet it is the other that makes us see living as precious.

Dr Kathryn Mannix
With the End in Mind

Death Café Lincoln NZ

Death Café Lincoln

Date: Saturday 22nd February
Time: 2.30pm– 4pm
Venue: Lincoln Event Centre

At a Death Café people, often strangers, gather to eat, drink tea or coffee and discuss death. The objective is 'to increase awareness of death with a view to helping people make the most of their (finite) lives'. A Death Café is a group directed discussion of death with no agenda, objectives or themes. It is a discussion group rather than a grief support or counselling session.

For further details and to RSVP, contact Richard on 0204 250 369 or view the Death Café Lincoln Facebook page.



West Melton COUNTRY FETE

SUNDAY 30 MARCH 2025

10am-3pm

WEST MELTON SCHOOL

 @westmeltonfete

WILFIELD RISE
WEST MELTON

mclcontracting

RayWhite



Earth Hour Celebration

A family evening out on Saturday 22nd March.

Lincoln Envirotown is inviting everyone to leave the lights off at home and to join us in some enjoyable and different family activities on the afternoon and evening of Saturday 22nd March.

The event commences with candle making from 3.30–6.30pm where participants can enjoy making soy candles. There will be a short "lantern" walk around Lincoln commencing at 7.30pm from the Laboratory. Some lanterns will be provided but people are asked to bring their own if they have them. Torches may also be helpful. The beautiful film 'Samsara' will be showing at The Apollo continuously from 6.30pm. There's no plot, just beautiful images, captured over a year, of the earth and how humans are living on her. No film booking required.

Earth Hour itself is designated to happen between 8.30–9.30pm and everyone is invited to join us in the courtyard of The Laboratory, Lincoln; the lights will be turned off and we'll have earth friendly activities on offer like playing cards, old school letter writing and calligraphy by the fire, storytelling, musical instruments, board games, dog grooming or anything you would like to contribute, to remind people that fun and connection can be had without electricity. We look forward to welcoming people to this evening of activity and enjoyment.

Detailed information about the event and the history and ethos of Earth Hour can be found by visiting [Humanitix – events.humanitix.com/earth-hour-lincoln-2025](https://events.humanitix.com/earth-hour-lincoln-2025); registration is required for the candle making which involves a charge for materials.

Kim Hill Hot Topic returns in March: The future of New Zealand's power

The popular "Hot Topic" discussion will take place on Thursday March 27th in the Stewart Building of Lincoln University from 6.30pm.

As per tradition the well-known Radio personality Kim Hill will lead a panel of experts who will discuss this year's topic "Powering Our Future" Once the panel have deliberated their varying views, the audience will be invited to question panel members.

Problems regarding New Zealand's current and future power supplies have manifested themselves in many ways since the theme for this year's discussion was determined. Enterprises have closed due to high power prices and the discussion of the balance between sustainable power sources, or the continuation of coal generation has been ongoing.

Our ability to grow electricity supplies and keep powering our country is of importance and interest to all of us.

The evening is always a stimulating and enjoyable occasion, and all are welcome. Food and refreshments are available.

More details and an invitation to register can be found by visiting [Humanitix – events.humanitix.com/powering-our-future](https://events.humanitix.com/powering-our-future) – or by visiting Lincoln Envirotown's website – lincolnenvirotown.org.nz – or Facebook Page.

Turn it off & rescue our planet.

CELEBRATE
EARTH HOUR WITH
LINCOLN ENVIROTOWN
SATURDAY 22ND MARCH 2025

TICKETED EVENT:
CANDLE MAKING \$20
3.30 - 6.30PM

FREE EVENTS:
FILM 6.30-8.30PM
LANTERN WALK 7.30-8PM
EARTH HOUR EVENT @
THE LABORATORY PUB
8.30 - 9.30PM

For more information, to register & book tickets go to
events.humanitix.com/earth-hour-lincoln-2025

Kim Hill hot topic
Powering our future
Our social and environmental responsibility

27 March 2025
Lincoln University Stewart Hall
Lecture Theatre One
Doors Open: 6:30pm
Event Starts: 7:30pm
Koha \$5.00
Refreshments & nibbles provided
Cash Bar

Panellists

Wim de Konig Director of Strategic Partnerships Lincoln University	Pip Newland Sustainability and Risk Orion Ltd.
Claudia Schneider Environmental Psychologist University of Canterbury	Nathan Surendran Energy Consultant Schema Consulting Ltd.

<https://44.ly/online2025>

We recently harvested our potato crop and uncovered several with unusual, animal-like shapes. I was curious to find out why these specimens occurred and found that there are many possible causes related to fluctuating growing conditions. These could include temperature changes, inconsistent moisture levels, soil compaction, pest infestations, improper planting depth, and even the variety of potato. It seems that any of these factors can lead to uneven tuber development and result in distorted shapes. Our grandchildren, Emily and Caleb like helping us, especially when the unexpected arises.



It's great to have able-bodied volunteers to undertake some of the more physically-demanding tasks. Recently, we wanted a stubborn tree stump removed and the Brown boys came to the rescue. Irrespective of the tasks, they tackle them with enthusiasm.



Did you know that the Lincoln Envirotown Community Gardens is in its 18th year of operation? On 15th February, Errol gave a talk at the Lincoln Library about the Gardens – its history, objectives, and various activities over the years. He recalled the establishment of the Gardens at the front of the old maternity hospital grounds. But when the district health board required the land for a new dental clinic, the Gardens had to be moved to the rear of the

grounds, where we are located today. Monthly workshops have been a major focus, and over the years we have conducted workshops on around 20 different topics. Eight of these are repeated mostly every year.



Our first workshop of the year will be on 22nd March, and our local ecologist Mike Bowie will talk about "Backyard Biodiversity", with strategies for attracting birds, insects, and lizards into our gardens. We welcome Mike back after being overseas for a while. We are promoting his workshop as a "family friendly" event. This is because Mike encourages children to come along, and perhaps bring along an insect they have found for him to identify.



Every year, Ellesmere Lions supply a generous supply of straw to us, and we are very grateful this. Many thanks to Richard Boyce for delivering the bales. We use the straw in composting, to cover bare soil over the winter, to surround and protect fragile plants and reduce soil compaction when walking on it.

Currently, Errol and I are visiting the gardens of people in our district who have invited us to see what they have achieved. "Green-fingers Galore" is our biennial event that celebrates good practice in the growing of vegetables. Next month I will include observations and stories from these visits.

– Ruth Wood, Coordinator, Lincoln Envirotown Community Gardens
Email: ruth.wood@xtra.co.nz, Mobile: 021 074 3905

selwyn timebank

Timebanking is an opportunity for people of all ages to come together and share time and resources. Examples of some of the things our members receive help with are baking, general repairs, weeding, cleaning, baking and transport. We also arrange several events and coffee mornings throughout the year. These provide an opportunity to meet other members and swap items such as excess produce and books. For more information on the great benefits of timebanking email [Lisa selwyntimebank@gmail.com](mailto:Lisa.selwyntimebank@gmail.com).

Celebrate harvest and autumn in Selwyn

HARVEST FESTIVAL

Saturday 29 March 2025, 10am–3pm
 Rolleston Town Centre
 (green space behind Te Ara Ātea)

Join us for the inaugural Harvest Festival, a vibrant local event celebrating the best of Selwyn's food, drink, and community spirit. This exciting weekend highlights local producers, eateries, and entertainment, with the hero event taking centre stage.



- **Farmers' Market:** Explore stalls featuring Selwyn's incredible local producers, growers, and wineries.
- **Tastings and demonstrations:** Experience the rich flavors of Selwyn with hands-on opportunities to learn about our local food and drink.
- **Entertainment:** Enjoy live music, family-friendly activities and a vibrant atmosphere.
- **Community showcases:** Discover displays from community and school gardens, showcasing creativity and sustainability.
- **Top Team Challenge:** Cheer on teams as they tackle fun, interactive challenges designed to test problem-solving, communication, and teamwork skills.
- **Scarecrow Competition:** Get creative and design your own harvest-themed scarecrow to showcase at the festival – fun for families, schools, and individuals alike.

Want to be a part of the Harvest Festival?

Are you a local producer, grower, eatery, enthusiastic home baker or artisan? Join us in celebrating the season! Find out how you can be involved at selwyn.nz/producers/expressions-of-interest

If you would like to discuss opportunities and ideas, email tourism@selwyn.govt.nz



Backyard biodiversity workshop

How to attract native birds, lizards and insects to your garden
 (A Lincoln Envirotown Trust family event)



Presented by Mike Bowie
at the Lincoln Envirotown Community Gardens
from 10.30 – 11.30 am on Saturday 22nd March

Now retired, Mike was an entomologist at Lincoln University for over 30 years. He worked on many ecological restoration projects including Quail Island, Mahoe Reserve and Te Ara Kakariki (Greenway Canterbury Trust). He has written many publications in the fields of entomology and ecological restoration, including co-authoring "Backyard Biodiversity in Canterbury". Mike will demonstrate how to increase the native biodiversity in your garden, section or farm through the use of specific plants, planting designs and refugia. He will also outline ideas for projects that children could undertake or assist with.

Children – challenge Mike by bringing along an invertebrate (insect, bug etc.) you have found in your garden for him to identify.

*Lincoln Envirotown Community Gardens are located 35 James St, behind the former Maternity Hospital.
 Gold coin donation per family appreciated to support the Community Gardens.*

*For more information, contact the Coordinator, Ruth Wood
 (Phone: 021 074 3905, Email: ruth.wood@xtra.co.nz)*

www.lincolnenvirotown.org.nz

FREE PREDATOR TRAP HIRE AND ADVICE




Lincoln Farmers & Craft Market

SATURDAY 29TH MARCH 10 AM – 12 PM

Usually open on the last Saturday of every month at the Lincoln Farmers & Craft Market.

selwyntraplibrary@gmail.com
www.facebook.com/groups/pflincoln
lincolnenvirotown.org.nz



What is it? Non-competitive running & walking group

Who is it for? Everyone!
All ages, All speeds


How far? 3km or 6km

When? Every Tuesday at 5:45pm


Where? Te Whariki Playground

How much? Gold coin

A group encouraging a community to exercise together



@RoadRunnersLincoln



Looking to the stars for Selwyn

Work has begun to investigate setting up the country's newest dark sky place in Selwyn. The Council is exploring the cost and timeframe for dark sky accreditation in the Arthur's Pass and Castle Hill areas. Dark sky areas have become increasingly popular tourist attractions and could give the district's growing tourism sector another drawcard. It could also work with other dark sky accredited areas in the South Island to create a regional experience.

Exploring the Dark Sky accreditation is an action that was agreed as part of the Council's Kai Aku Rika Economic Development Strategy, which was adopted in November. The strategy was confirmed through the Long-Term Plan with 62% of people supporting the Council playing a more active role in the district's economy, including submissions from across the community supporting dark sky initiatives for the high country.

The Kai Aku Rika Economic Development Strategy was developed together with over 250 local businesses leaders who shared their valuable insights and vision on how the Council and businesses can work together to build a resilient future-fit Selwyn to grow the local



economy and increase the prosperity and economic wellbeing of residents and businesses.

Business Canterbury Chief Executive Leann Watson said the strategy is "an excellent piece of work that will play a strong part in shaping future thinking for the district. As one of New Zealand's fastest-growing districts, Selwyn plays a crucial role in driving Canterbury's economy. Selwyn's bold vision and forward-thinking strategy lays the groundwork for sustainable growth and innovation."

Work on other key areas of the strategy is also underway, including to develop an Energy Plan in partnership with Lincoln University and Orion Group investigating renewable energy opportunities.

Orion GM of Energy Futures Sam Elder says the strategy's focus on a collaborative approach would become a benchmark for innovation and a driver for economic growth.

"We look forward to partnering in the development of the Selwyn Energy Plan catalyst project, and ongoing engagement and support for the broader Strategy implementation and evolution."

The Council has also formalised relationship agreements with Lincoln University and KiwiRail. It has established an Economic Development Special Priority Subcommittee, which first met in November, to promote sustainable growth in Selwyn and guide its role in the Economic Development Strategy. A cross-sector steering group of diverse business stakeholders will also be formed to drive strategy actions. Further local business events will be coming in the next few months, alongside the Selwyn Business Survey, which aims to capture insights from the business community and identify future challenges and opportunities.

—Selwyn District Council



Saturday 29 March, 10am–3pm
Rolleston Town Centre,
green space behind Te Ara Ātea

Join us at Selwyn's inaugural harvest festival, a vibrant local event celebrating the best of Selwyn's food, drink, and community spirit. There will be a farmers' market, tastings, fun activities for the kids and live music.

Expressions of Interest

Are you a local producer, grower, eatery, enthusiastic home baker or artisan? Join us in celebrating the season of harvest and autumn.



Find out more information at:
selwyn.nz/harvestfestival



Consultation starts on a council-owned organisation for Selwyn water services

In February, Selwyn District Council launched a three-week consultation with our community about creating an independent council-owned organisation to manage our drinking water and wastewater. The Council formally approved the consultation document, which outlines the benefits, costs, and risks of the preferred independent water services council-owned organisation (WSSCO) compared to the alternative future in-house water delivery model.

The Council are keen to hear what the community thinks about both options before we finally decide and implement the changes required to meet new Government legislation.

"We want to keep costs as affordable as possible, so we must examine which model provides low-cost certainty in the long term. The analysis shows that within ten years, the WSSCO will be the cheaper option, and these savings will continue to grow," explains Selwyn District Council Mayor Sam Broughton.

"If we keep the services in-house, which

does have some short-term gains, but with greater uncertainty, our community would be faced with higher ongoing charges in a few years, and so in-house looks less sustainable from a cost-of-living crisis point of view," says Broughton.

The Mayor says Council staff have done a fantastic job running and investing in our water infrastructure over the past few years.

"However, we have seen political interference in water infrastructure investment around the country, which has led to leaking pipes and a lack of investment. Our preferred option is to keep our water pipes in public ownership, while bringing in the best brains and experience to lead water investment and compliance with future regulatory requirements."

In November last year, councillors voted to explore the WSSCO for managing drinking water and sewage in response to the Government's new Local Water Done Well legislation, which created significantly higher expectations for councils regarding water services.



"Councillors retain an open mind and we are keen to hear views from across Selwyn that we may not have already considered. We want to implement the best option to future-proof our water services in line with the Waikirikiri Ki Tua Future Selwyn strategy." Either way the council would retain control as the sole shareholder, says Broughton.

Selwyn residents can read the full consultation document and make a submission by visiting www.selwyn.govt.nz/yourwater.

The consultation will finish on March 12, and submission hearings will be held on March 20 before the council considers its final decision on April 2.

–Selwyn District Council

LOOKING TO RELOCATE?

Our expert sales team is here to help! With our personalised service and in-depth knowledge of the local market, we'll support you every step of the way to ensure a smooth transition and help you **achieve the best possible price for your property.**

Contact us today for a free, no-obligation appraisal of your home and discover its true market value.



Crystal
Giles

Felicity
Darling

Tarcille
Roffey

Jeremy
Andrews

Ross
Mitchell

Jan
Green

Rachael
McIntosh

Matthew
Hale

Julian
Twiss

Dane
Petheram

Harcourts
Four Seasons Realty

Lincoln Office

☎ 03 662 9933

✉ lincoln@harcourts.co.nz



Licensed Agent REAA 2008

Living well and ageing well research talks to be held in Lincoln

Te Papa Hauora with the Canterbury Medical Research Foundation have been running a series of free community talks over the past 18 months. These are an opportunity for communities outside Christchurch central to hear about health-related research from Canterbury experts. The purpose of the talks is to raise awareness around health-related topics relating to living and ageing well (such as brain health, activity and mobility, social interaction, nutrition and mental health). They have been really well attended, with audiences of around 100 people at each event.

Our March 11th event is focused on eating well prior to surgery, ageing and the environment, and physical activity and engagement as we age.

The programme runs from 10.30am–12pm, including three speakers each talking for 15–20 minutes, with a panel Q&A session to follow.

Registration is required, and light refreshments are served.

www.healthprecinct.org.nz/news

Presented by **TE PAPA HAUORA** The Future of Health and **Canterbury Medical Research Foundation**

Living well & ageing well research talks

Tuesday 11 March, 10.30am-12pm
Lincoln Event Centre

Limited spaces available, registrations essential. Visit www.healthprecinct.org.nz/news

"Brisk, intense, with a strong emotional hit"

MAUREEN LENNON'S
HELEN
DIRECTED BY GARRY THOMAS

20-22 MARCH 2025
7.30pm, Elmwood Auditorium, Aikmans Road, Merivale
All seats \$20. Tickets from www.littleboxtheatre.nz

A Little Box At The Top Of The Stairs Production in association with Nick Hern Ltd and NZ Play Bureau

RICCARTON PLAYERS
Presented in association with New Zealand Play Bureau Ltd.

The CURIOUS INCIDENT of the DOG in the NIGHT-TIME

A PLAY BY **Simon Stephens** BASED ON THE NOVEL BY **Mark Haddon**

9-19 APRIL 2025
Directed by Caitlyn O'Rourke assisted by Luke Longworth

SHOWS: Nightly* 7.30PM 9th-19th April + Matinee 4PM Sunday 13th April
*No performances Monday 14th & Tuesday 15th

VENUE: Rangi Ruru Girls' School Drama Theatre, Merivale Lane, Christchurch
TICKETS: Adults \$25, Concession / CSC / Students \$22

Book now! Phone 03 338 4699 or visit WWW.RICCARTONPLAYERS.CO.NZ

Nurse Maude Services at Community Care Lincoln

Community Care welcomed Nurse Maude, as a tenant, to the new Centre in 2013. This long term agreement works exceptionally well for both parties, looking after health services in our community, and conveniently based in the town centre, providing care from a well-equipped treatment room, on site. Post hospital hire equipment is available from the centre reception.

Client supplies, continence and stomal, are delivered by Nurse Maude every Thursday, to Community Care Lincoln, 16 Lyttelton Street. These can be picked up from the Centre or delivered to your home.

Nurse Maude is delighted to offer a range of District Nursing and Specialty Clinics at Community Care Lincoln in addition to visiting people in their homes and a range of clinics in Merivale.

Appointments for clinics at 16 Lyttelton Street are arranged in partnership with your GP. To book an appointment or to find out more about referrals for District Nursing and Specialty Clinics, please contact nursing@nursemmaude.org.nz or call 03 375 4246.

District Nursing

Nurse Maude wants the best for you. Our team of Registered Nurses, Enrolled Nurses and Health Care Assistants collaborate with your GP, Practice Nurse, ACC and any other specialist services to provide you with a comprehensive nursing service.

Services provided include:

- Wound care
- Compression bandaging
- Negative pressure wound therapy
- Continence management (catheter and bowel)
- Medication management
- Palliative care and support
- End of Life care
- Community I.V. therapy
- Heart Failure monitoring
- Tunnel Drain management.



Speciality Clinics include:

Stomal Therapy

Information and support are available if you have, or are expect-



ing to have a stoma. Stomal therapy supports you to live with a stoma independently, comfortably and with dignity. The comprehensive service includes education prior to surgery, visits (in hospital and at home after discharge), arranging ostomy equipment, appliances and/or stomal supplies, clinics for regular checks and assessments, access to a dietitian and referral to other health professionals and agencies.

Specialist Wound Clinic

Assessment, management and advice on chronic and complex wounds. The clinic also provides care plans, follow-up and prevention programmes such as compression hosiery. A dietitian is available if required.

Continence Service

We provide support, assessment, treatment and education for anyone aged 4–18 who have a complex medical issue, including those with an Autism or ADHD diagnosis. Continence management is provided to those 18 years and over who have complex and chronic health conditions that lead to daily urinary and bowel incontinence.

Infusion Services

The Infusion Service provides support to patients requiring intravenous access for infusions such as antibiotic therapy and Aclasta.

Diabetes Service

Providing support and information for managing people with Type2 diabetes in the community, including assistance with the start of insulin or changes in medication. The service provides access to specialist nurses and a dietitian.

Appointments are pre-arranged in partnership with your GP. There are no walk-in services available.

Kind regards, Community Care Lincoln

Web: www.lincolncomcare.co.nz

Facebook: fb.com/lincolncommunitycare

Email: admin@lincolncomcare.co.nz

Phone: (03) 325 2007



ELLESMERE LIONS PEA STRAW

TAKING ORDERS – PEA STRAW AVAILABLE NOW

Help the Lions continue with their current fundraising projects. Small bales \$8 and medium bales at \$70. Price includes delivery in Lincoln and Selwyn District.

Contact: Richard Boyce, phone 027 7141 324 or 325 2279
or Alex Hayward, phone 324 4094. Email lionspeastraw02@gmail.com
with name, address, telephone number and amount required.



Playing to our strengths: the economic advantage of New Zealand's parks

Greenspaces including local, regional and national parks are often considered a 'nice to have' when infrastructure funding is concerned. Now, the release of the Research Report: *The Economic Value of Parks: A Framework and Preliminary Estimate* proves the sector carries huge significance to Aotearoa New Zealand's economy.

The research report was produced by the Agribusiness and Economics Research Unit (AERU) at Lincoln University and commissioned by the New Zealand Parks Leaders Forum to provide an overview of the economic value of parks and how they positively contribute to the economy.

As the report confirms, Aotearoa New Zealand's green spaces are pivotal to our economy in many ways including attracting international and domestic tourists, delivering recreational, cultural and other ecosystem services and providing wellbeing benefits that reduce public health costs.

Mr Geoff Canham, Convenor of the New Zealand Parks Leaders Forum, shares the importance and timeliness of the report.

"Parks and open spaces – otherwise known as green infrastructure – have always had a low profile with spending considered discretionary. Yet, its investment back into the economy exceeds \$12 billion per annum. The economy relies on parks in more ways than is understood and carries huge significance by touching many sectors and industries.

"Greenspaces are not just places for people to enjoy physical and mental health, sport and social engagement. Parks underpin the whole bioeconomy. An investment in parks helps our economy grow while a budget cutback would have a detrimental economic impact. For uninterrupted prosperity, parks are vital to our primary and other sectors to sustain what they rely on as free or low-cost inputs.

"Now is an ideal time to discuss the opportunities delivered by our national, regional and local parks so we can keep moving the economy forward. Whether it be tourism, resources, wellbeing, climate change, biodiversity, freshwater, property values or social cohesion, funding levels determine our economic performance."

With many groups responsible for managing parks including central government, local government, iwi, private and charitable trusts, this report delivers insight into the long-term value of Aotearoa New Zealand's open spaces and identifies areas that offer economic benefits and consequences concerning park funding. The tools and resources to be published alongside the report will assist these organisations in demonstrating the economic value of the greenspaces they are responsible for.

One of these tools is a spreadsheet now available online (parksmanagers.org.nz/economicvalueofparks) for researchers to build on this preliminary study and produce more detailed estimates of the economic value of the network of parks in Aotearoa New Zealand.

As greenspaces are an important component of the country's intergenerational wealth, AERU's study estimated the current value of our network of parks, assuming benefits for eight

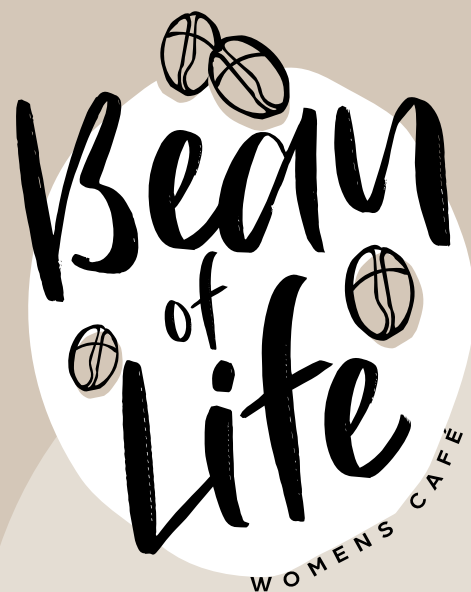
generations (200 years). This produced an economic value of national, regional and local parks estimated as \$3 trillion.

The calculation focuses on four major benefits: the wellbeing of Kiwis, non-use benefits to Kiwis, regulating and supporting service and the economic benefits from international tourism. The benefits are then offset against four major costs: accident compensation payments for accidents, greenhouse gas emissions of international visitors, central and local government spending and deadweight loss of taxation.

"Aside from the recreation and wellbeing benefits, biodiversity and nature service, the report makes the case for the economic value of parks in financial terms," says Mr Canham.

"When reviewing infrastructure spending, overlooking the value of parks belies an economic advantage for Aotearoa New Zealand. This report will hopefully generate broader discussions so as a country we can play to our strengths."

Do you want to get to know people.
Maybe new to Lincoln.
Just want a place to have a coffee & chat.
We have the place for you.



Great coffee & baking - No charge

Open every Tuesday morning,
9.30am-11.30am during school term time

Where: Lincoln Union Church in
Te Whare Manaaki, 20 James Street

Preschoolers welcome
Hope to see you there



Church Ph: 03 325 2257

Lincoln Scottish Country Dance Club

The Lincoln Scottish Country Dance Club meets in the Lincoln Events Centre, Meijer Drive, from 7.30pm on Tuesdays. Looking for fun, friendship and fitness? Then come along for a look as the first night is free. New members are most welcome as full tuition is given and a partner is not essential. For any further information, contact Annette (03) 349 7126 or Coreen (03) 344 2057. Email: lincoln@dancescottish.org.nz

St Patrick's Craft and Friendship Group

Join a small, friendly group of people, who either bring along a current craft project or come just for friendship and afternoon tea. Current group members include knitters, embroiderers and sewers so they can teach others or help with any problems. Everyone is welcome to come along. The group meet in St Patrick's Parish Centre, which is joined to St Patrick's Catholic Church at 31 Gerald Street, from 1.30pm to 3.30pm every Tuesday. For more information contact Yvonne on (03) 366 9795 or 027 334 1151.

useful contacts

Art Group of Lincoln	Faye 347 3399	Lincoln Scouts	021 258 5680 (text)
Community Garden	021 074 3905	Lincoln Table Tennis Club	325 7694
Death Café Lincoln	020 425 0369	Lincoln Tennis Club	lincolntennisnz@gmail.com
Down by the Liffey Gallery	325 2877	Lincoln Women's Institute	741 1549
Ellesmere Badminton Club	027 325 2044	Mother4Mother	357 4970
Ellesmere Indoor Bowls	325 3143	Rotary Club of Lincoln	029 999 8330
Ellesmere Probus Club	325 6165	Selwyn Lions	325 7957
Junior Enviro Action Group	027 307 0767	Selwyn Parenting Network	021 166 8603
Kaituna Golf Course	027 477 9425	Senior Citizens Club	027 712 7195
Liffey Toastmasters	027 955 7996	SeniorNet	027 547 4793
Lincoln Badminton Club	347 9707	Spinning/Knitting Group	325 3320
Lincoln Bowling Club	325 2289	Springs Day Club	329 5634
Lincoln Bridge Club	325 3222	Springston Evening Garden Club	344 5781
Lincoln Business Assn	325 2039	Springston Garden Club (daytime)	325 5002
Lincoln Community Care	325 2007	Tai Tapu Garden Club	329 6268
Lincoln Community Committee	021 171 1054	Time Banking	423 0456
Lincoln Cricket Club	029 240 0093	Toy Library	021 044 2407
Lincoln & Districts Historical Soc.	325 3320	U3A Ellesmere	028 415 4961
Lincoln Envirotown	329 5858	Community Dental	0800 846 983
Lincoln Farmers Market	329 5757	Healthline	0800 611 116
Lincoln Girl Guides	027 462 8871	Lincoln Comm. Response	325 7732
Lincoln Golf Club	325 2453	Lincoln Library	347 2876
Lincoln ICONZ	347 8722	Lincoln Maternity Hospital	325 2802
Lincoln Indoor Bowls	347 3212	Lincoln Police	378 0160
Lincoln Masonic Lodge	349 9905	Lincoln Fire Station	325 2801
Lincoln Men's Shed	260 1348	Nurse Maude	375 4200
Lincoln Netball Club	lincolnnetballsecretary@gmail.com	Selwyn Community Patrol	660 0320
Lincoln Outdoor Bowls	325 2289		info@selwyncommunitypatrol.org.nz
Lincoln Patchwork and Quilting	021 129 2833	The information included in this news-letter is provided as a service to our community. The Selwyn Printing Company is not responsible for the accuracy of information. Any updates or alterations, please contact LCN@selwynprint.co.nz	
Lincoln Plunket	325 2179		
Lincoln Rugby Club	027 303 1879		

Springston Garden Club (Day)

Springston Garden Club meets on the first Thursday of the month, 1.30pm at the Lincoln Events Centre. We have a variety of interesting speakers, raffles, sales table, and garden tours with like-minded gardening enthusiasts.

If you are an experienced gardener, novice or just curious to know more please contact Sue Warman, (Secretary) on 027 303 2706 or springstongardenclub@gmail.com. New members welcome.

Lincoln Spinning & Knitting Group

The Lincoln Spinning and Knitting Group is now meeting at Lincoln Library on the 1st and 3rd Thursdays of the month from 11am to 1pm. All welcome to join our small, friendly group. For more information phone Adriana on (03) 325 3320 or Rosemary on (03) 337 4811. Find us on Facebook by searching 'Lincoln Spinning & Knitting Group – Canterbury, N.Z.'



Ellesmere Badminton Club

Friendly Social Badminton

Everyone welcome, Beginners to experienced players

Tuesdays 7.30–9.00pm

First Tuesday in April until last Tuesday in September

Lincoln Event Centre

\$5 per person/night

For more info contact Katinka 027 325 2044

Lincoln Bridge Club Free Beginners Lessons

Tuesday evenings 7.30–9.30pm. Lincoln Event Centre
Contact Stuart on 325 3222.

Lincoln Bridge Club is a friendly, social club playing Duplicate Bridge. The club meets on Monday afternoons at the Event Centre from 1.30–4.30pm and on Thursday evenings from 7.00–10.30pm.





AFTER SCHOOL PROGRAMME
For ages: 5 to 12

Thursdays
3:15–4:30pm

• Afternoon Tea • Music
• Games • Crafts • Bible Stories

children@lincolnchurch.org.nz
or phone Clau 027 389 8516

www.lincolnchurch.org.nz
www.facebook.com/lincolnunion

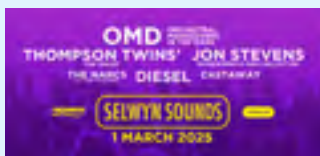


Lincoln Union Church
Te Whare Manaaki
THE WELCOME PLACE

EVERY SATURDAY: Lincoln Farmers' & Craft Market – On the green beside Lincoln Library. 10am–1pm

March 2025

SATURDAY 1 MARCH



Selwyn Sounds

Lincoln Domain, with OMD, Thompson Twins' Tom Bailey, Jon Stevens (Noiseworks & INXS), Diesel, The Narcs feat. Kim Willoughby, and Castaway selwynsounds.co.nz

Karma Keg at The Laboratory

Fundraising for Halswell United AFC, 2–4pm

SUNDAY 2 MARCH



Selwyn Parenting Network: Children's Day

Totally FREE fun, laughter, activities and games for the whole family! 11am–3pm at Foster Park, Rolleston. Additional Darfield event held 12pm–3pm at Malvern Recreation & Social Centre

Pioneer Hall Open Day

Corner Gerald St & Kildare Tce, Open 2–4pm

Liffey Cottage Open Day

James Street, open 2–4pm Children's University visitors welcome

Sunday Music Session at The Laboratory

3–5pm, feat. Nick Jackman

TUESDAY 4 MARCH

Lincoln Senior Citizens AGM
1.30pm, Lincoln Event Centre

SATURDAY 8 MARCH

Karma Keg at The Laboratory
Fundraising for Ararira Springs Primary, 2–4pm

SUNDAY 9 MARCH

Sunday Music Session at The Laboratory
3–5pm, feat. Steph & Sandi

TUESDAY 11 MARCH

Living Well & Ageing Well Research Talks
Free public event, 10.30am–12pm, Lincoln Event Centre, registration essential via www.healthprecinct.org.nz/news

THURSDAY 13 MARCH

Ko Kāi Tahu me Te Tiriti, Kāi Tahu and the Treaty
7–8.30pm, Te Ara Ātea, Rolleston, 16+ years, Bookings required selwynlibraries.co.nz/events

SATURDAY 15 MARCH

St Patrick's Day at The Laboratory
All day breakfast, outdoor games and fun for the kids and live music from 7pm

SUNDAY 16 MARCH

Sunday Music Session at The Laboratory
3–5pm, feat. Henry McIlraith

WEDNESDAY 19 MARCH

Nerd Night Selwyn
7pm at The Laboratory
Tickets available at the bar www.fb.com/NerdNiteSelwyn

SATURDAY 22 MARCH

Autumn Market at the Lincoln Farmers' & Craft Market
10am–1pm, on the green beside Lincoln Library

Backyard Biodiversity Workshop

10.30am, Lincoln Envirotown Community Gardens, Gold coin donation

Death Café Lincoln

2.30pm, Lincoln Event Centre

Earth Hour at The Laboratory

Candle making, lanterns, film, music, storytelling, games events.humanitix.com/earth-hour-lincoln-2025

26–29 MARCH

Lincoln High School presents



Book online via Trybooking: trybooking.com/nz/ULX

SUNDAY 23 MARCH

Sunday Music Session at The Laboratory
3–5pm, feat. Rockabella

THURSDAY 27 MARCH

Kim Hill Hot Topic: Powering Our Future
Lincoln University Stewart Hall, Lecture Theatre One, Doors 6.30pm. Register via the Envirotown website or Humanitix: events.humanitix.com/powering-our-future

SATURDAY 29 MARCH



Harvest Festival

10am–3pm, Rolleston Town Centre (behind Te Ara Ātea) Celebrating the best produce from around the district, there will be tastings, fun activities for the kids, hands-on workshops and live music. selwyn.nz/harvestfestival

Selwyn Trap Library

Free trap hire and advice at the Lincoln Farmers' Market

SUNDAY 30 MARCH



West Melton Country Fete
10am–3pm, West Melton School

Sunday Music Session at The Laboratory

3–5pm, feat. Dalia Thompson

April 2025

3–24 APRIL

Sign Language for Beginners

Four-week programme, 6–8pm, Thursdays at Lincoln Library, 16+ years. \$20 / \$40, Bookings required. selwynlibraries.co.nz/events

SATURDAY 12 APRIL

Battle of the Bands – Selwyn Heats

8pm, Rolleston Community Centre, register your entry at battleofthebands.co.nz (Spectator entry \$20pp)

MONDAY 14 APRIL

Tai Tapu Walkway – Walking Festival

Join the Selwyn District Council's biodiversity team on the enchanting Tai Tapu Walkway, meet 10am Rhodes Domain carpark

Easter Crafts

Crafting fun at Lincoln Event Centre, 3.30–4.30pm, \$5pp, Bookings required selwyn.govt.nz/events

April School Holidays

Watch this space — there's an exciting line-up of fun events and activities for the kids to enjoy these holidays.



Pick up a flyer from your local Selwyn facility from 24 March, or check out: selwyn.govt.nz/events



Lincoln Motel

21 luxury motel units in the heart of Lincoln

Studio & 1 Bedroom Units | 2 Bedroom Units
Spa Bath Units | Access Units

4-6 Maurice Street, Lincoln
Reservations 0800 001 689 | Ph. (03) 974 1620

www.lincolnmotel.co.nz



Lincoln group

All welcome!

Termtime Wednesday mornings from 9.15am

Te Whare Manaaki, 20 James Street, Lincoln

\$4 per family per session

- Friendly, welcoming and caring environment
- Meet other local mums, dads and caregivers
- Suitable for 0 to 5 years
- Fun songs, rhymes and actions which help your child's development
- We provide instruments and props
- We provide morning tea, and toys for the children to play with before and after the music session



lincolnmainlymusic@gmail.com

Tai Tapu Garden Club

Our garden club meets every 3rd Monday at 1pm
at Tai Tapu Community Centre.

Flower competitions each month, raffles and afternoon tea,
with a variety of garden visits and speakers.

Please contact Lynne Parker (Secretary) on 027 505 9573.

NEW MEMBERS WELCOME

faith in your community



ST. PATRICK'S CATHOLIC CHURCH

31 Gerald Street, Lincoln

Saturday Vigil: 5.30pm

Sunday Mass: 8.30am

Weekday Mass: Tuesday to Friday 9am

Parish Priests

Fr Brian Fennessy, M: 027 675 8456

Fr Chris Orr, M: 027 659 1962

Selwyn Parish Leadership Team Chair
Tricia Smith Ph: 325 2234

selwyncatholicparish@gmail.com



LIFE CHURCH SELWYN

10am Sundays at Lincoln
Event Centre (Meijer Drive).

All welcome – an intergenerational
and multicultural church.

Life Kids programme available
during service.

Campus Pastors: David & Jo Bennetts

Life Church Office:
1543 Springs Road, Lincoln

www.lifechurch.nz
selwyn@lifechurch.nz



LINCOLN BAPTIST CHURCH

109 Carnaveron Drive, Lincoln

10am Sunday Service
All welcome.

An intergenerational and
multicultural church

Youth and children's programme
available during service.

Life/home groups;
Youth Groups

Phone: 325 3396

Email: admin@thelink.nz
www.thelink.nz



LINCOLN ANGLICAN PARISH

Incorporating St Stephen's, Lincoln;
St Mary's, Springston; St Mark's,
Greenpark and St Paul's, Tai Tapu.

St Stephen's and St Paul's have a
weekly service at 10am Sundays.
The others meet at 9 or 9.30am,
2-3 times a month.

Contact for more details:
Polly Warren, People's Warden
Ph: 321 7370. Mob: 027 8787 643
Rev. Mark Barlow
lincolnanglican.org



LINCOLN UNION CHURCH

20 James Street, Lincoln

Sunday Service 10am
Together with God

Sunday School
10am during term time

Mainly Music 9:15am Wednesdays
during term time

All welcome.

For more information contact:
Minister: Rev. Phyll Harris
Ph: 325 2257
www.lincolnchurch.org.nz



LINCOLN CHINESE CHURCH

20 James Street, Lincoln

Sunday Service 2pm

Youth Group:
Every Friday 6pm-9pm
(Free meal, Bible study,
Group sharing)

All welcome.

Pastor: Charles Yu

Tel: 325 3238
Mobile: 027 615 9796
Email: yuf228@hotmail.com



ALL NATIONS BAPTIST CHURCH

Join us – Everyone is welcome.

- In our church you will find
- Traditional Hymns • KJV Bible
- Great Fellowship
- International Community

Every Sunday at 4pm
Lincoln Community Care
16 Lyttelton Street, Lincoln.

Pastor Paul Anger
Ph: 021 033 7274
Email: paul.anger@hotmail.com

Lincoln Community News

We welcome stories,
listings, articles and
news from community
groups, organisations
and residents of Lincoln
and surrounding areas.

For more information
or to submit articles,
please email:

LCN@selwynprint.co.nz

Meet your Street Fund



Street gatherings are great ways to meet and connect with neighbours, fostering a supportive community where everyone, especially newcomers, feels welcome and included.

To support these gatherings, a subsidy of up to \$100 per event is offered through the Meet Your Street funding, available year-round.



Find out more.

Neighbourhood get together becomes a regular event

Nothing says getting to know your neighbours like a barbeque and games.

And for Lynda in Lincoln, the street barbeque they held with support from the Council's Meet Your Street fund last November was so popular they decided to host it again.

Twenty-four neighbours including all age ranges from six months old to someone in their 90's, attended.

"I was really taken aback by everyone who showed up, they all talked to each other and had a good time. It was a very successful event. A big thank you to the Council for helping with the get together." says Lynda.



Neighbours Aotearoa

Apply for the Meet Your Street Fund and take part in Neighbours Aotearoa!

Every March, Neighbours Aotearoa ask everyone living in Aotearoa to get to know their neighbours a little better.

Neighbours Aotearoa will take place from 1-31 March 2025

Find out more at neighboursaotearoa.nz



selwyn.govt.nz/meetyourstreet

